

外观和尺寸 Appearance and Dimension

CHL-5000

可选配金属滚轮
Optional metal idler wheel

可选配尼龙滚轮 Nylon Roller LSN-5000P

CHL-5220

可转头方向为 Direction of rotor CHL-5220

CHL-5030

可选配金属滚轮
Optional metal idler wheel

CHL-5300

Nylon Rod

CHL-5050

Stainless steel

CHL-5330

0.1.2 stainless steel wire

CHL-5100

Stainless Steel Plunger

CHL-5381

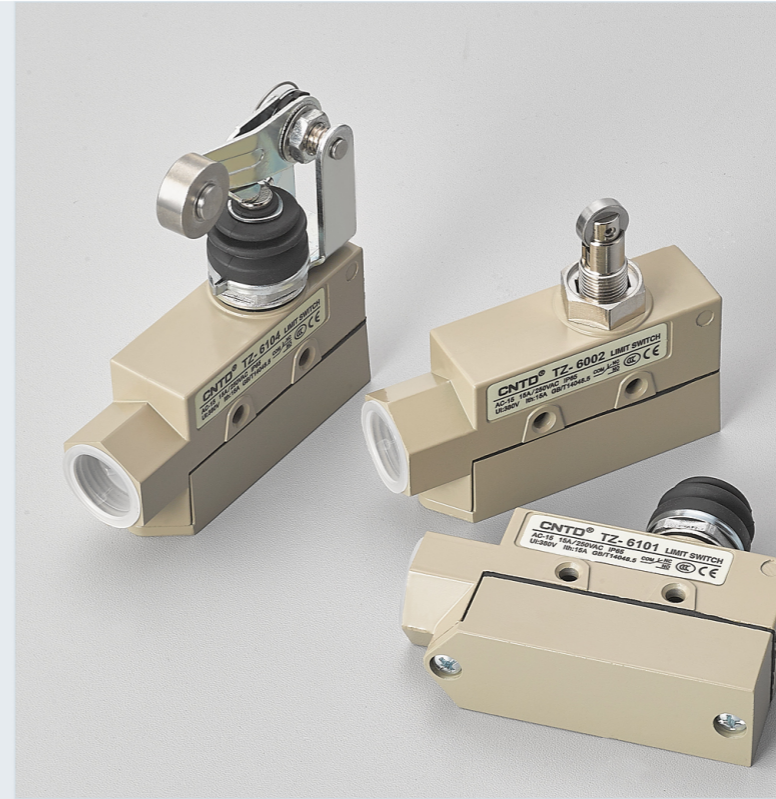
Stainless Steel

CHL-5200

Direction of rotor CHL-5220

CHL-5391

50 dia. x 8.2 rubber roller



特点 Features

- 内藏 CM 卧式限位开关
- 具有高机械强度的一体铸造铝合金外壳
- 具耐油、防水和防压结构
- 额定值及特性同 CM 卧式限位开关
- 引动器种类多，方便使用

- Built-in CM horizontal limit switch
- High mechanical strength, mainly consists of aluminum cast
- Water-proof and oil-proof construction
- Same rated value and characteristic with CM horizontal limit switch
- Various actuators for different applications

接点型式 Contact Form



额定值 Ratings

额定电压 Rated Voltage	非电感性负载 Noninductive Load (A)				电感性负载 Inductive Load (A)			
	电阻性负载 Resistance Load		灯泡负载 Lamp Load		电感性负载 Inductive Load		马达负载 Motor Load	
	NC	NO	NC	NO	NC	NO	NC	NO
125VAC	5	5	1.5	0.7	3	3	2	1
250VAC	5	5	1	0.5	3	3	1.5	0.8
8VDC	5	5	3	3	5	4	3	3
14VDC	5	5	3	3	4	4	3	3
30VDC	5	5	3	3	4	4	3	3
125VDC	0.4	0.4						
250VDC	0.2	0.2						
突入电流 Inrush Current	N.C.:24A 以下、N.O.:12A 以下 N.C.: below 24A, N.O.: below 12A							

- 注: 1. 电感性负载之功率因素在 0.4 以上 (AC)。时间常数在 7msec 以下 (DC)。
2. 灯泡负载之突入电流为稳定状态电流之 10 倍。马达负载之突入电流为稳定状态电流之 6 倍。
3. 带弹簧系列产品，操作体的使用范围为从弹簧的前端到弹簧全长的 1/3 以内。

- NOTES: 1. Inductive load has a power factor of 0.4 min.(AC) and a time constant of 7 msec. max.(DC).
2. Lamp load has an inrush current of 10 times the steady-state current, while motor load has an inrush current of 6 times the steady-state current.
3. Product with spring, its usable range of operating part is within one third of the whole spring length from the front end of spring.

动作特性 Operating Characteristics

型号	Model	TZ-6	TZ-6001	TZ-6002	TZ-6003	TZ-6004	TZ-6043	TZ-6101	TZ-6102	TZ-6103	TZ-6104	TZ-6143
操作力	Operating force	OF(最大)(Max.)	250~350g	250~350g	570g	570g	800g	500g	640g	640g	640g	640g
回弹力	Release force	RF(最小)(Min.)	114g	114g	170g	170g	240g	100g	230g	230g	230g	230g
预行程	Pre-travel	PT(最大)(Max.)	0.4mm	0.5mm	4mm	4mm	2mm	1mm	5mm	5mm	5mm	5mm
行程移动分辨率	Movement differential	MD(最大)(Max.)	0.05mm	0.05mm	0.4mm	0.4mm	0.1mm	0.12mm	0.4mm	0.4mm	0.4mm	0.4mm
过行程	Over travel	OT(最小)(Min.)	5.5mm	3.6mm	6mm	6mm	5mm	3.5mm	6mm	6mm	6mm	6mm
动作位置	Operating Position	OP(mm.)	38.2 ± 0.8mm	49.7 ± 1mm				45.8 ± 0.8mm	49.7 ± 0.8mm			

规格 Specifications

操作速度 Operation speed	5mm 至 0.5m/s 5mm-0.5m/s
动作频率 Operating frequency	电气: 20 次 / 分 Electrical: 20 operations/min
接点电阻 Contact resistance	25mΩ 以下 (初期) 25mΩ max. (initial value)
绝缘电阻 Insulation resistance	100MΩ 以上 (在 500VDC 下) 100MΩ min. (below 500VDC)
电介强度 Dielectric strength	非连续端子间 1,000VAC, 50/60Hz 持续 1 分钟 1500VAC, 50/60 Hz for 1 minute between current-carrying and non-current-carrying metal parts 载电流与无载电流零件间 1,500VAC, 50/60Hz 持续 1 分钟 1500VAC, 50/60 Hz for 1 minute between current-carrying and non-current-carrying metal parts
端子与接地之间 Terminal and ground	1,500VAC, 50/60 Hz 持续 1 分钟 1500VAC, 50/60 Hz for 1 minute between each terminal and ground
振动 Vibration	10 至 55Hz, 1.5mm 双振幅 10-55Hz, 1.5mm double amplitude
冲击 Shock	机械耐久: 1,000m/Sec ² (约 100G' S) 误动作耐久: 300m/Sec ² (约 30G' S) Mechanical durable: 1,000m/Sec ² (about 100G' S) Malfunction: 300m/Sec ² (about 30G' S)
周围温度 Ambient temperature	使用时: -20~+80°C (没有结冰) Using: -20~+80°C (With no icing)
湿度 Humidity	95%RH 以下 <95% RH
电气寿命 Electrical life	500,000 次以上 500,000 operations above
保护构造 Protection level	IP66

注: 导管连接器尺寸常规默认为 M20x1.5, 配电缆接头: 导管连接器尺寸 PG13.5, 型号加 (-P), 例: TZ-6104-P.
NOTES: The default size of conduit connector is M20x1.5, outfitting cable connector. Conduit connector size is PG13.5, with product model number plus (-P), example: TZ-6104-P.